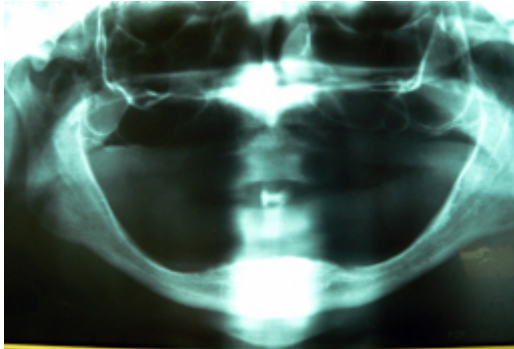


Full Reconstruction Upper Jaw

Female Patient

Age at time of surgery: 75



Case demonstrates extreme bone resorption where all of the bone that once supported the teeth has gone as well as basal bone below this level.

Patient had been without teeth since twenty years of age and her attempt to use a conventional lower full denture had become dysfunctional. Patient had been wearing a full upper denture for the same period of time.

This has had nutritional and general health disturbances (profound dietary restrictions and resultant weight loss).

Patient was in good general health, despite this, and had had two successful hip replacements during the previous eight years, and was a non-smoker.

Patient had jaw shape "E" and bone quality of 1 to 2.

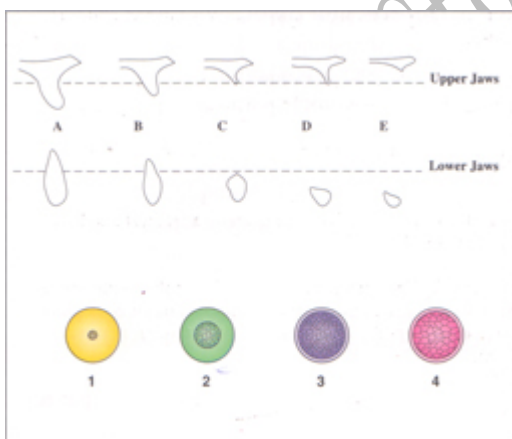
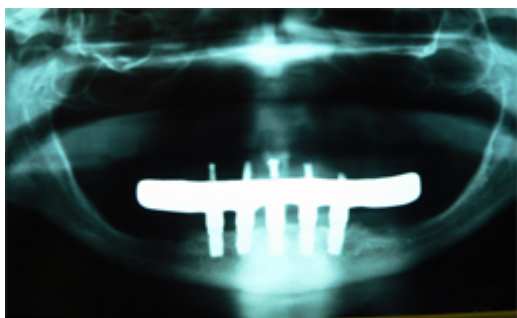


Fig. 1. Shape groups A-E and quality groups 1-4, according to the classification proposed by Lekholm & Zarb (1985).

Partially Edentulous Reconstruction

Upper Jaw



Treatment

We treated the patient with placement of five Brånemark System dental implants which ultimately supported a "hybrid" prosthesis.

This consists of a gold frame supported by the implants which in turn supports denture teeth that are processed onto it.

The denture teeth are not visible on the x-ray as they are acrylic.

This procedure involved 3 months healing in 2002.

Two stage treatment to allow time for bone healing around the titanium screws.

Today in 2005, implants that are placed in high quality bone with high insertion torque can be restored earlier and perhaps not require the full 3 to 4 months healing time traditionally required in the lower jaw.

Fees

Fees charged in 2002/3 came to \$19,000.00

2005 fees for a similar case \$21,000.00 - Majority of our cases are still two stage procedures with fees split evenly between the first and second stages (three to four months).

Patient Outcome

Essentially a complete oral rehabilitation with patient reporting unrestricted function and good cosmetics and speech with a completely stable implant supported prosthesis.